

MONTHLY MEMBERSHIP PROGRESS REPORT

LOCATION MINNESOTA

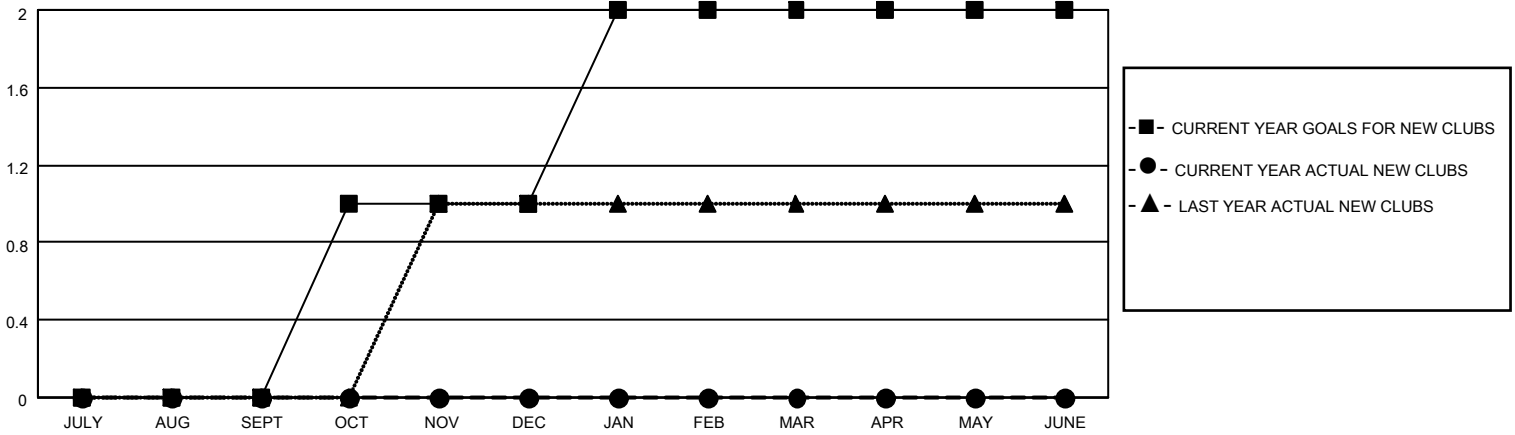
District 5M 2

Results as of: 1/31/2022

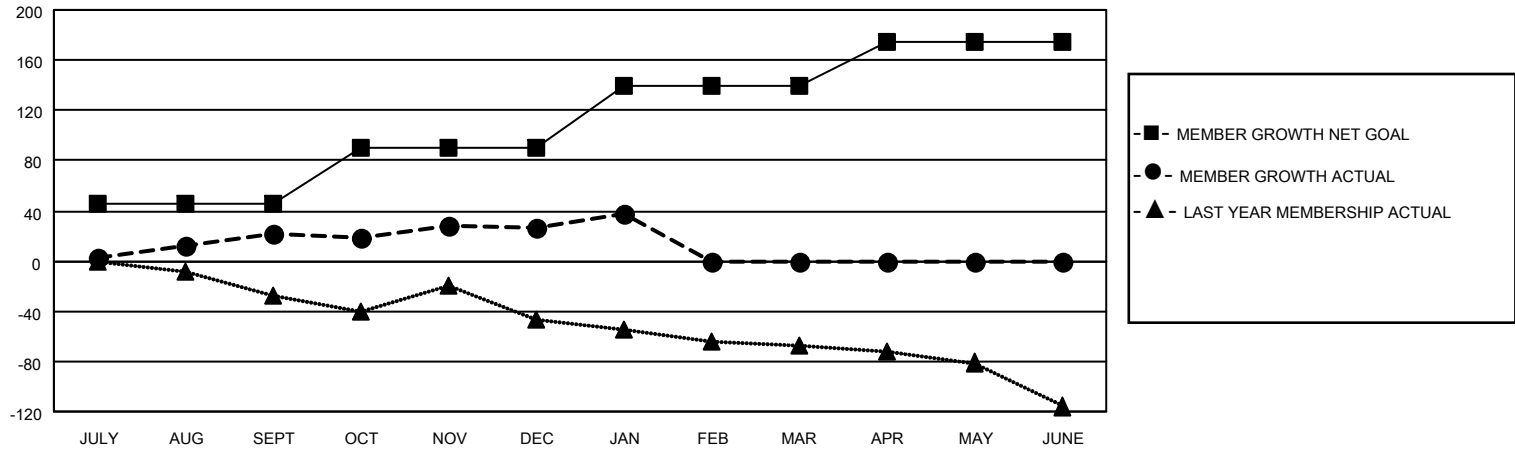
Clubs			
RESULTS FOR 2021-2022			
QUARTER	NEW CLUB GOAL	NEW CLUBS	DROPPED CLUBS
JULY/AUG/SEPT	0	0	0
OCT/NOV/DEC	1	0	0
JAN/FEB/MAR	1	0	1
APR/MAY/JUNE	0	0	0

Members			
RESULTS FOR 2021-2022			
QUARTER	MEMBER GROWTH NET GOAL	MEMBER GROWTH ACTUAL	DROPPED MEMBERS ACTUAL (including transfers)
JULY/AUG/SEPT	45	68	44
OCT/NOV/DEC	45	64	57
JAN/FEB/MAR	50	27	14
APR/MAY/JUNE	35	0	0

GOALS AND ACTUAL NEW CLUBS CUMULATIVE



GOALS AND ACTUAL MEMBERS CUMULATIVE



DROPPED CLUBS: 1

41 CLUBS OF 66 ADDED 1 OR MORE NEW MEMBERS

GENDER DISTRIBUTION

MALE	1,484 (66.34%)
FEMALE	753 (33.66%)
NON BINARY	0 (0.00%)
PREFER NOT TO ANSWER	0 (0.00%)

DROPPED MEMBERS

[CLICK HERE FOR CUMULATIVE MEMBERSHIP DATA](#)

DECEASED	20
CLUB CANCELLED	0
OTHER	95
TOTAL	115

TOTAL FAMILY UNIT MEMBERS 382

FAMILY MEMBERS PAYING HALF DUES 196